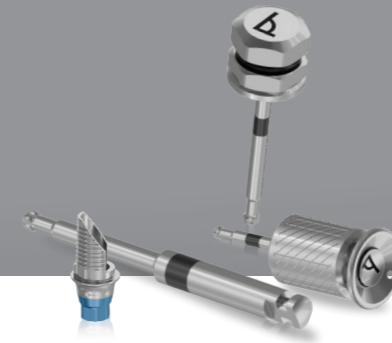


Angulated Screw Channel

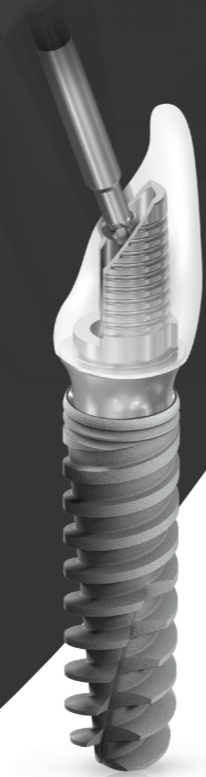


The angulated screw channel (ASC) solution offers a transformative approach to dental restorations. ASC strategically places a screw access hole at an angle within the prosthesis, optimizing both function and esthetics.

By integrating digital planning and specialized drivers, ASC enhances accuracy and predictability in implant-supported restorations. This approach signifies a significant advancement in dental care, prioritizing esthetics and functionality to ensure patient satisfaction.

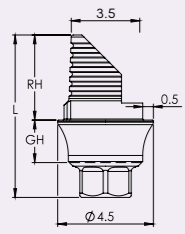
Adin's angulated screw channel ti bases support gingival heights of 1-3mm for every each implant platform and allow for angulation of up to 20 degrees.

*All dimensions are in mm



Angulated Tools				D1	D2	L	L2
	RP6400		Angulated Screw Extractor Hand Driver	1.4	9.4	24.7	10
	RP6401		Angulated Star Screw Hand Driver - Short 23.4L	1.4	9.4	23.4	9.0
	RP6402		Angulated Star Screw Hand Driver - Long 28.4L	1.4	9.4	28.4	14.0
	RP6403		Angulated Star Screw Torque Driver - Short 17.0L	1.4	7.0	17.0	11.0
	RP6404		Angulated Star Screw Torque Driver - Long 22.0L	1.4	7.0	22.0	16.0
	RP6405		Angulated Star Screw Handpiece Driver - Extra Short 20.0L	1.4	2.35	20.0	7.0
	RP6406		Angulated Star Screw Handpiece Driver - Short 25.0L	1.4	2.35	25.0	12.0
	RP6407		Angulated Star Screw Handpiece Driver - Long 30.0L	1.4	2.35	30.0	17.0

RS Abutment Angular Engaged



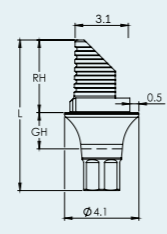
	TB04413	TB04423	TB04433
RH	4	4	4
GH	1	2	3
L	6.7	7.7	8.7



RS3405

Abutments are supplied with RS3405 screw.
Recommended torque 30-35Ncm.
Also available separately.

UNP Angular Engaged



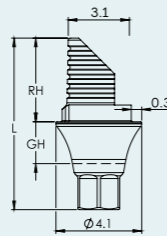
	TB06613	TB06633
RH	6	6
GH	1.5	3
L	9.8	11.3



UNP0001

Abutments are supplied with UNP0001 screw.
Recommended torque 25Ncm.
Also available separately.

NP Angular Engaged



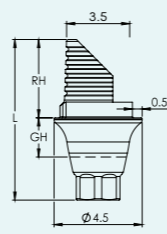
	TB02613	TB02633
RH	6	6
GH	1.5	3
L	9.7	11.2



NP0001

Abutments are supplied with UNP0001 screw.
Recommended torque 25Ncm.
Also available separately.

RP Angular Engaged



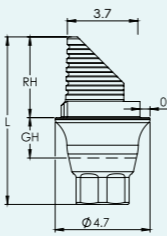
	TB03613	TB03623	TB03633
RH	6	6	6
GH	1	2	3
L	9.2	10.2	11.2



RP0001

Abutments are supplied with RP0001 screw.
Recommended torque 30-35Ncm.
Also available separately.

WP Angular Engaged



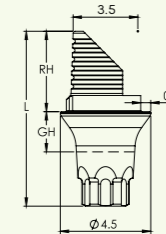
	TB05613	TB05623	TB05633
RH	6	6	6
GH	1	2	3
L	9.3	10.3	11.3



WP0001

Abutments are supplied with WP0001 screw.
Recommended torque 30-35Ncm.
Also available separately.

UniFit Angular Engaged



	TB07413	TB07423	TB07433
RH	4	4	4
GH	1	2	3
L	7.7	8.7	9.7



TB07613

RH	6
GH	1
L	9.7



UF0001

Abutments are supplied with UF0001 screw.
Recommended torque 30-35Ncm.
Also available separately.

