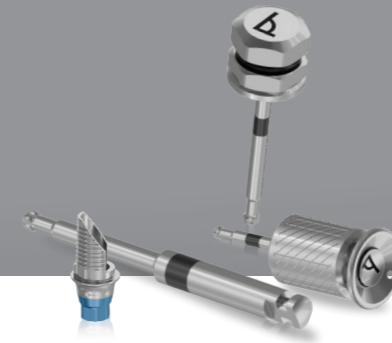


# Angulated Screw Channel

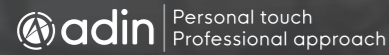
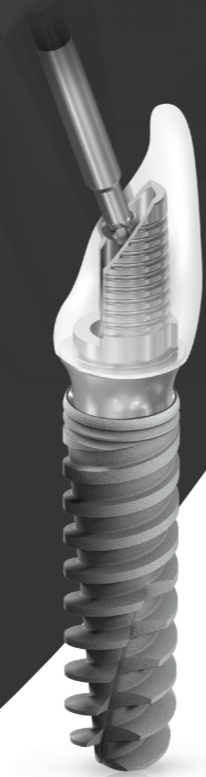


The angulated screw channel (ASC) solution offers a transformative approach to dental restorations. ASC strategically places a screw access hole at an angle within the prosthesis, optimizing both function and esthetics.

By integrating digital planning and specialized drivers, ASC enhances accuracy and predictability in implant-supported restorations. This approach signifies a significant advancement in dental care, prioritizing esthetics and functionality to ensure patient satisfaction.

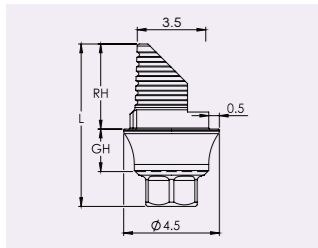
Adin's angulated screw channel ti bases support gingival heights of 1-3mm for every each implant platform and allow for angulation of up to 20 degrees.

\*All dimensions are in mm



Angulated Tools				D1	D2	L	L2
	RP6400		Angulated Screw Extractor Hand Driver	1.4	9.4	24.7	10
	RP6401		Angulated Star Screw Hand Driver - Short 23.4L"	1.4	9.4	23.4	9.0
	RP6402		Angulated Star Screw Hand Driver - Long 28.4L	1.4	9.4	28.4	14.0
	RP6403		Angulated Star Screw Torque Driver - Short 17.0L	1.4	7.0	17.0	11.0
	RP6404		Angulated Star Screw Torque Driver - Long 22.0L	1.4	7.0	22.0	16.0
	RP6405		Angulated Star Screw Handpiece Driver - Extra Short 20.0L	1.4	2.35	20.0	7.0
	RP6406		Angulated Star Screw Handpiece Driver - Short 25.0L	1.4	2.35	25.0	12.0
	RP6407		Angulated Star Screw Handpiece Driver - Long 30.0L	1.4	2.35	30.0	17.0

**RS Abutment Angular Engaged**

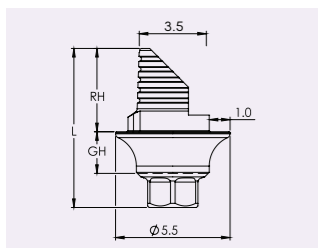


	TB04413	TB04423	TB04433
RH	4	4	4
GH	1	2	3
L	6.7	7.7	8.7

	TB04613	TB04623	TB04633
RH	6	6	6
GH	1	2	3
L	8.7	9.7	10.7

	TB04813	TB04823	TB04833
RH	8	8	8
GH	1	2	3
L	10.7	11.7	12.7

**RS Abutment Angular Engaged Wide**



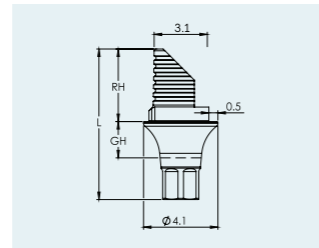
	TB04413W	TB04423W	TB04433W
RH	4	4	4
GH	1	2	3
L	6.7	7.7	8.7

	TB04613W	TB04623W	TB04633W
RH	6	6	6
GH	1	2	3
L	8.7	9.7	10.7

	TB04813W	TB04823W	TB04833W
RH	8	8	8
GH	1	2	3
L	10.7	11.7	12.7

**RS3405** Abutments are supplied with RS3405 screw. Recommended torque 30-35Ncm. Also available separately.

**UNP Angular Engaged**



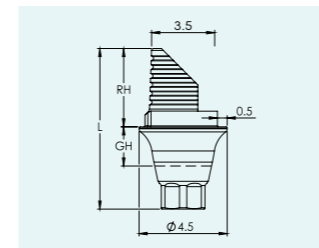
	TB06413	TB06423	TB06433
RH	4	4	4
GH	1.5	2	3
L	7.8	8.3	9.3

	TB06613	TB06623	TB06633
RH	6	6	6
GH	1.5	2	3
L	9.8	10.3	11.3

	TB06823	TB06813
RH	8	8
GH	1.5	2
L	11.8	12.3

**UNP0001** Abutments are supplied with UNP0001 screw. Recommended torque 25Ncm. Also available separately.

**RP Angular Engaged**



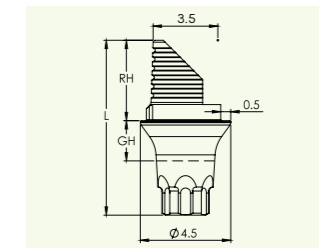
	TB03413	TB03423	TB03433
RH	4	4	4
GH	1	2	3
L	7.2	8.2	9.2

	TB03613	TB03623	TB03633
RH	6	6	6
GH	1	2	3
L	9.2	10.2	11.2

	TB03813	TB03823	TB03833
RH	8	8	8
GH	1	2	3
L	11.2	12.2	13.2

**RP0001** Abutments are supplied with RP0001 screw. Recommended torque 30-35Ncm. Also available separately.

**UniFit Angular Engaged**

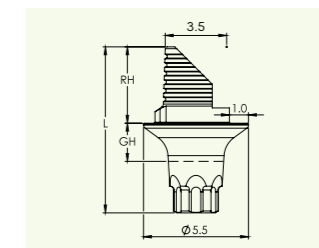


	TB07413	TB07423	TB07433
RH	4	4	4
GH	1	2	3
L	7.7	8.7	9.7

	TB07613	TB07623	TB07633
RH	6	6	6
GH	1	2	3
L	9.7	10.7	11.7

	TB07813	TB07823	TB07833
RH	6	6	6
GH	1	2	3
L	11.7	12.7	13.7

**UniFit Angular Engaged Wide**



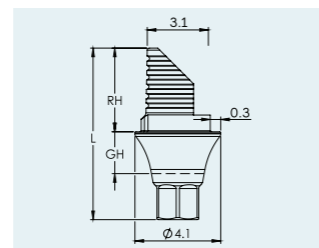
	TB07413W	TB07423W	TB07433W
RH	4	4	4
GH	1	2	3
L	7.7	8.7	9.7

	TB07613W	TB07623W	TB07633W
RH	6	6	6
GH	1	2	3
L	9.7	10.7	11.7

	TB07813W	TB07823W	TB07833W
RH	8	8	8
GH	1	2	3
L	11.7	12.7	13.7

**UF0001** Abutments are supplied with UF0001 screw. Recommended torque 30-35Ncm. Also available separately.

**NP Angular Engaged**



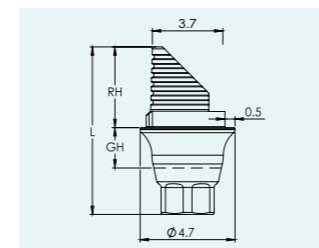
	TB02413	TB02423	TB02433
RH	4	4	4
GH	1.5	2	3
L	7.7	8.2	9.2

	TB02613	TB02623	TB02633
RH	6	6	6
GH	1.5	2	3
L	9.7	10.2	11.2

	TB02813	TB02823
RH	8	8
GH	1.5	2
L	11.7	12.2

**NP0001** Abutments are supplied with UNP0001 screw. Recommended torque 25Ncm. Also available separately.

**WP Angular Engaged**

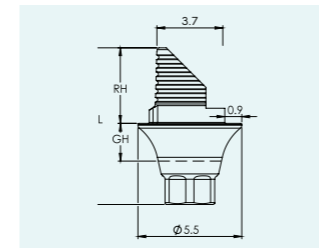


	TB05413	TB05423	TB05433
RH	4	4	4
GH	1	2	3
L	7.3	8.3	9.3

	TB05613	TB05623	TB05633
RH	6	6	6
GH	1	2	3
L	9.3	10.3	11.3

	TB05813	TB05823	TB05833
RH	8	8	8
GH	1	2	3
L	11.3	12.3	13.3

**WP Angular Engaged Wide**



	TB05413W	TB05423W	TB05433W
RH	4	4	4
GH	1	2	3
L	7.3	8.3	9.3

	TB05613W	TB05623W	TB05633W
RH	6	6	6
GH	1	2	3
L	9.3	10.3	11.3

	TB05813W	TB05823W	TB05833W
RH	8	8	8
GH	1	2	3
L	11.3	12.3	12.3

**WP0001** Abutments are supplied with WP0001 screw. Recommended torque 30-35Ncm. Also available separately.

